

Statement

Thank you for purchasing our product. This start guide will talk about main usages of the product. More information can be found on our website and the help center. This user guide may contain inaccurate content due to hardware and software upgrade. It is subject to change without previous notice.

Safety Caution

1. Please do not put any fluid container on the product.
2. Please use the product in ventilated environment and prevent blocking the vents.
3. Please use included power supply with the product to prevent damage to the product.
4. Please use the product under its standard working temperature and humidity.(advised in this manual or distributor's website)
5. Dust on PCB may cause short circuit. It is suggested to clean the dust on PCB timely to make the product work properly.
6. Please obey the regulation and policy in your country and area during the installation of this.

Out of Box Audit

After receiving the product, please check all products and accessories according to distributor's Package Includes information. If any is missed or damaged, please contact the distributor.

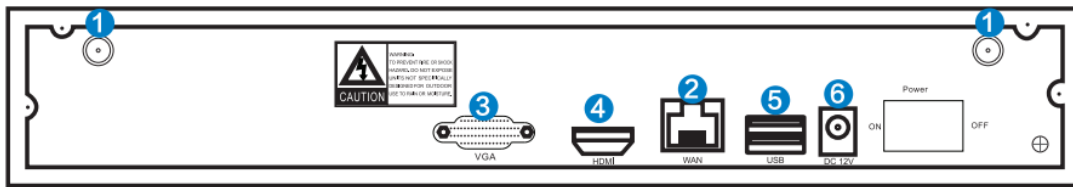
Packing list		
ID	Item	Quantity
1	WIFI NVR	1 pc
2	Screw bag(4 screws for HDD)	1 pc
3	DC 12V2A power supply (for NVR)	1 pc
4	User manual	1 pc
5	WIFI IP Camera	4/8pcs
6	DC 12V1A power supply(for IPC)	4/8pcs
7	Screw bag (for IPC)	4/8pcs
8	Antenna Extension Cord	1/2(4CH/8CH)pcs

Before Installation

This product may require cabling. All products and parts are required to be tested before installation and cabling.

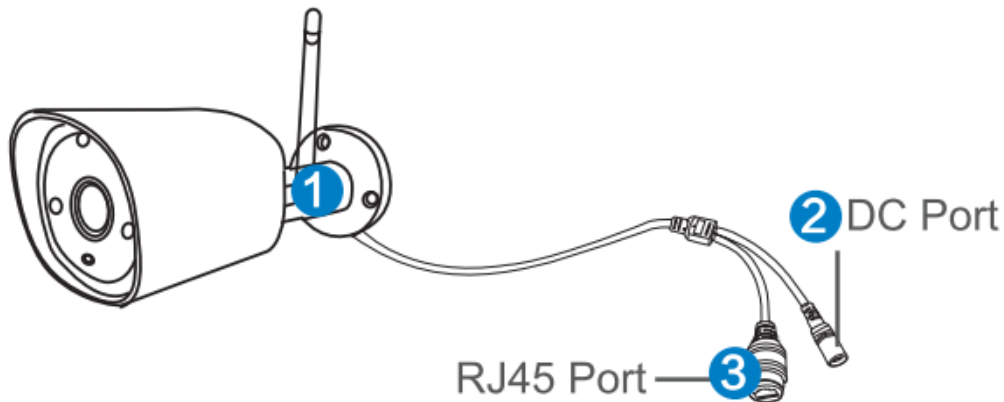


NVR



1. WIFI Antenna Ports: Double antennas to WIFI range
2. WAN Port: Connect your NVR to Internet
3. VGA Port: For viewing on VGA monitor
4. HDMI Port: For viewing on HDTV
5. USB Ports: For mouse and backup
6. Power Input: DC 12V 2A

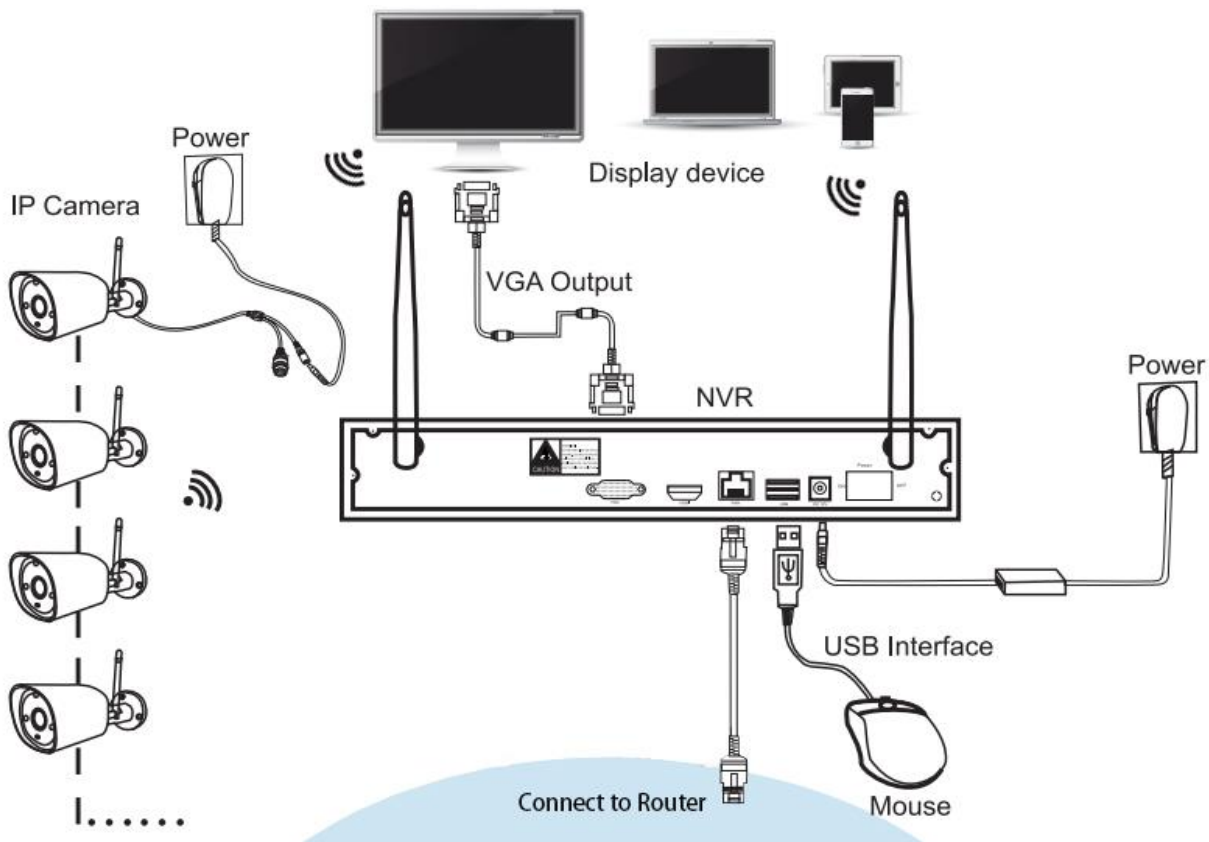
IPC



1. WIFI antenna: WiFi connection with NVR
2. DC Port: Input power 12V 1A;
3. RJ45 Port: for matching code and wired connection between IPC and NVR. Our WIFI NVR KIT is already matched code before leaving factory. If users need to re-match code or use wired connection, please refer to how to add IP camera as below.



Installation Instruction of WIFI NVR KIT



(The camera connected with NVR via Wi-Fi directly at independent Wi-Fi channel.)

Setup the System

This system is standalone with embedded Linux Operating System in the NVR. Just like a desktop PC, need to hook a screen to the NVR to enter the OS. Any TV, monitor with VGA or HDMI input should work for it.

1. Install antennas for cameras and the NVR.
 2. Connect a screen to the NVR via its HDMI or VGA port (HDMI and VGA cable not included)
 3. Plug the NVR to power (use bigger 12V 2A power adapter)
 4. Plug cameras to power (use smaller 12V 1A power adapters).
 5. Within seconds, you should see camera's images on the screen.
 6. Plug the mouse (included) to an USB port on back of NVR. You shall then be able to operate on the system.
- In the OS you can find fullest functionalities including live view, record, playback, video backup and all settings.

Default ID: admin Password: none (means leaving the password empty, just click login)

Tips: To protect your privacy, please set your password at earliest convenience. Right click the mouse → Go to System Setup → System Admin → User Management to set password.



HD Install

The system may not include hard disk depending on the kit you selected. The NVR works with most 3.5" SATA HDD or 2.5" SATA HDD.

Steps to install a hard drive (Please skip this step if your system has preinstalled HDD.)

1. Unplug your NVR from power, unscrew and remove the top cover.



2. Connect the SATA power and data cables from the NVR to the corresponding ports on your HDD (as shown).



3. Hold the hard drive and the DVR, and gently turn it over and line up the holes on the hard drive with the holes on the NVR. Use a Phillips screwdriver to fix the cover using the provided screws.



Record Video

Record video is very easy on camera system.

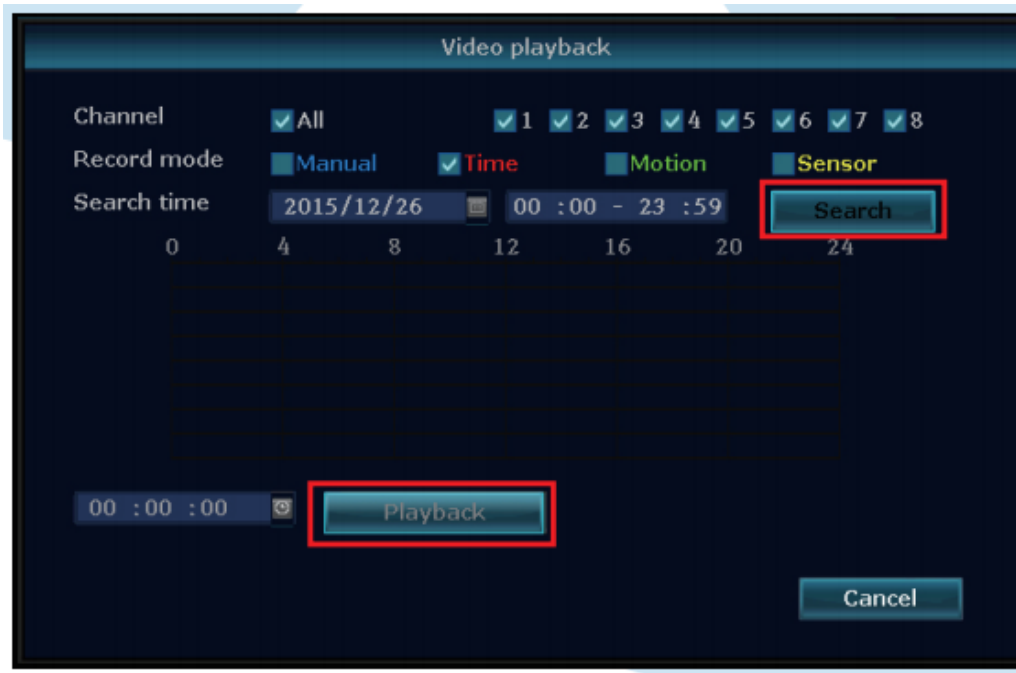
1. Timing Record, set time periods want the NVR to record. Click right button → System setup → Record setup → Record Plan, setup the periods that need the NVR to record. Everyday 0:00:00-23:59:59 means 24x7 recording. The system records 24x7 by default when it detects hard disk.



2. Manual Record, the shortcut to turn on record. Click right button→Manual Record, turn ON or OFF the record of certain channels. Red dot on right above corner means manual record is ON.
3. Motion Record. Motion Record means certain channel(s) will be recorded only when movement is detected. Click right button→System setup→Record setup→Record Plan, by unselecting Time and selecting Motion, the channel will record only when motion detected.

Playback Video on NVR

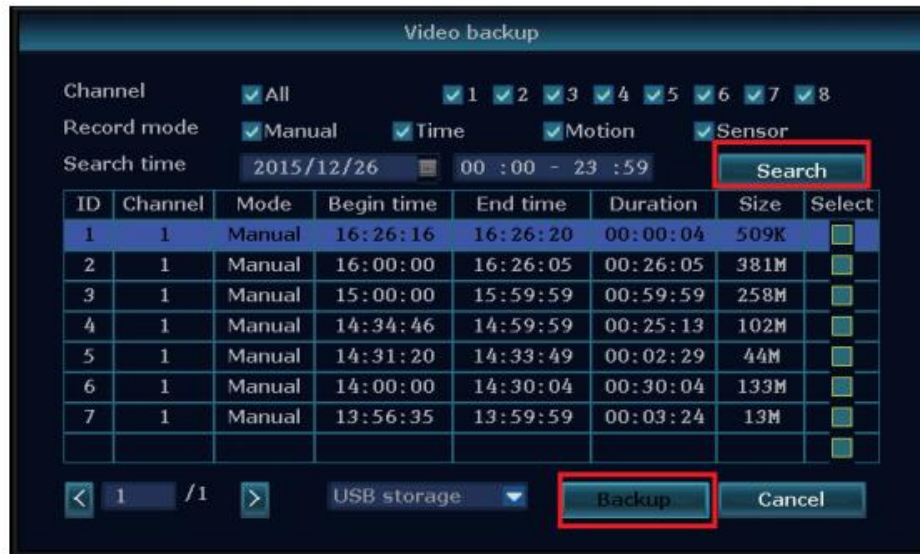
In the NVR system, right click the mouse, click Video playback to enter the Video Playback system. Specify channels and time to search videos. Click playback to start play record videos.



Video Backup

1. 2 USB port: Plug U flash disk into the USB port of NVR. Right click, click **Video backup**, select the Channel, Record mode and Search time, click **Search** button to show the corresponding videos. Select record file in the list, then click **Backup** (support 32G U flash disk at max. Recording file is packed one time per hour.)
2. 1 USB port: Right click, click **Video backup**, select the Channel, Record mode and Search time, click **Search** button to show the corresponding videos. Select record file in the list, then click **Backup**, then insert a flash disk within reminding 1 minute, the system will backup recording file to the flash disk.

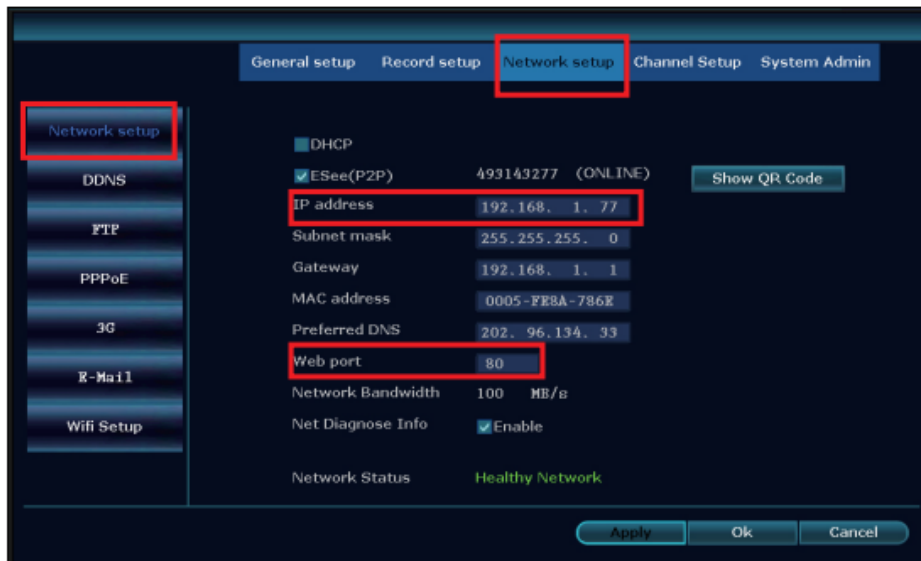




View on PC via IE (Internet Explorer)

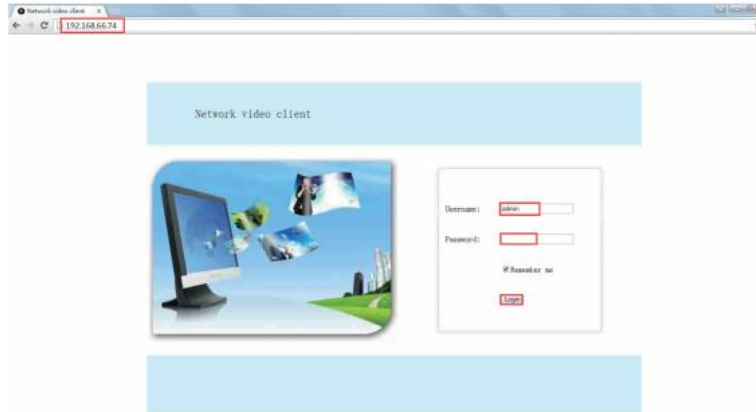
When your PC is in same LAN with the NVR (normally means they are connected to the same router)

- Step1. Find the IP address and port number of the NVR (IP address can be found in **System setup**→**Network setup**).



- Step2. Type the NVR's IP address in the address bar of IE browser, for example: <http://192.168.1.77>. If the default Web port 80 has been changed, e.g. to 100, the new port number needs to be typed in the IP address in the browser, for example: <http://192.168.1.7:100>.

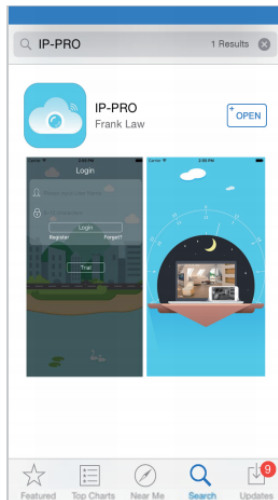




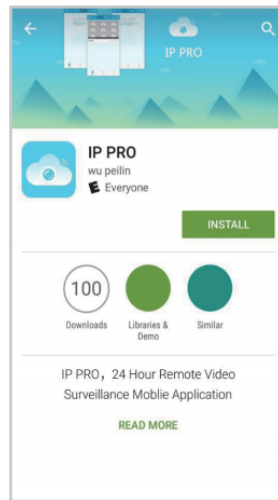
View on Mobile

1. Download the APP "IP Pro"

Scan the QR Code below to find the free mobile app, or search "IP Pro" in APP store/Google play. Download and install the App, then run it.



iPhone APP



Google play APP



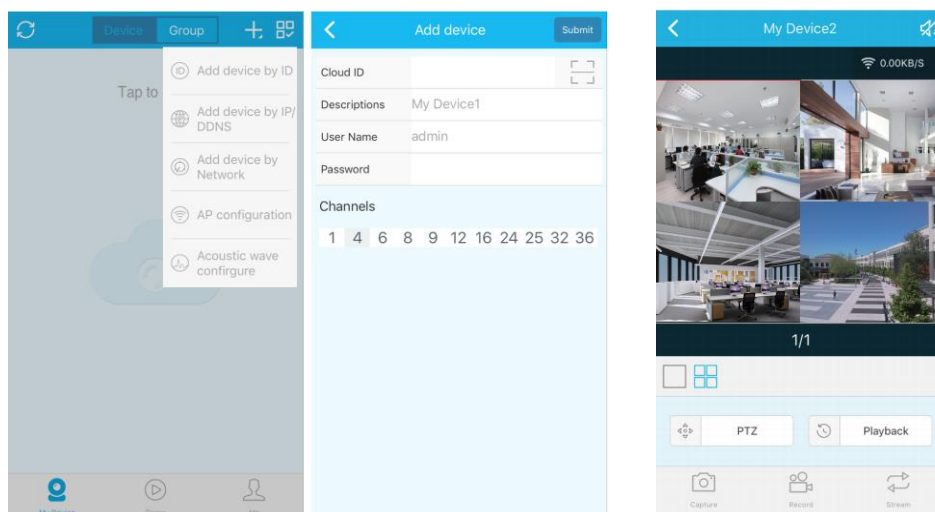
APP download

2. Add the NVR system to App's device list

Run the IP Pro App, login with account or click **Local**, click "+" to show the drop list in the next window, then click "Add device by ID" to enter the **Add device** window. Cloud ID can be found in the NVR's Network setup window, or the right bottom corner of the monitor. Name a nick name, e.g. "Home Camera", in the Description field. Fill in the User name (default user name is "admin") and Password (default is empty), specify the total channels then click **Submit**. Go back to the device list to view the cameras.

Tips: if the password has been changed on NVR system, please update it in the App for access.

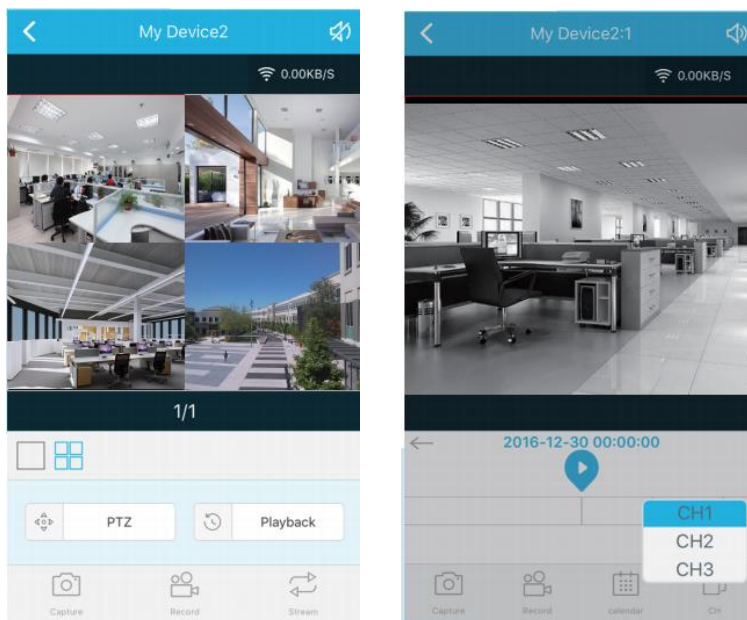




Playback on Mobiles

In the IP Pro App, click **Playback** while viewing live video of the system to enter the remote playback window. The App automatically playbacks channel 1, click the **CH** icon at the bottom right to switch to the other channels.

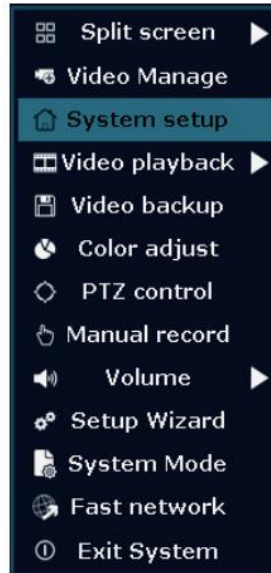
Tips: Videos in playback are HD, which require very good transmission condition. We suggest to playback in LAN. Remote playback out of LAN may not work well due to connection and network condition.



MENU-DO What

Right click of NVR's mouse to open the main menu, right click again to exit the current menu or return.





Split screen: Change status of live view. Any single camera or multiple cameras can be chosen.

Video Manage: Manage IP cameras and NVR channels

System setup: All system settings

Video playback: Playback recorded videos

Video backup: Backup recorded videos

Color adjust: Adjust the image setting of the camera

Manual record: Shortcut to change the record settings

Volume: Adjust volume of the audio (works only for audio cameras)

Setup Wizard: Step by step guide of first time general settings

Fast Network: Shortcut to network settings

Exit System: Logout, reboot, close screen output and shut down the system

System setup

Right click button, then click **System setup** to enter the window that enables all system settings.

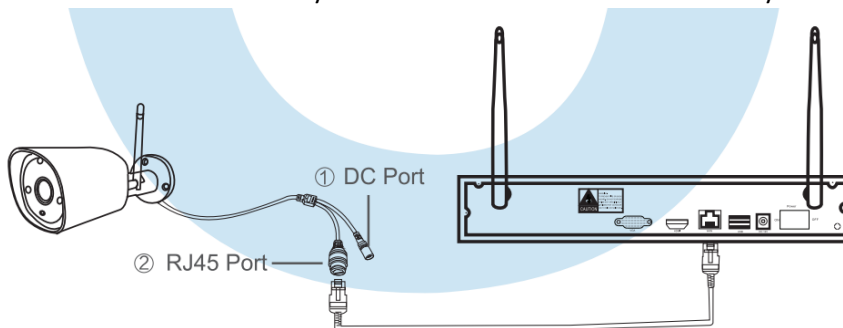
- **General setup:**
 - Language
 - Time
 - Display resolution
 - Name each camera
 - Auto switch from one camera to another
- **System admin** enables
 - System version
 - System maintenance including system upgrade
 - User and password management
 - Restore to default settings
 - System log
 - HDD information



- **Record setup**(This enables you to set)
 - Record plan for each channel video detection
- **Network setup**(This enables you to set)
 - All network related settings.
- **Channel setup**(This enables you to set)
 - Manage channels and cameras

Add Cameras

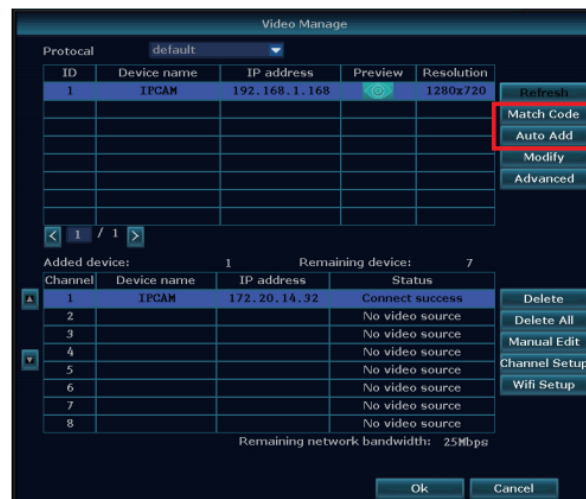
NVR kit has already been matched code in factory setting, and the video will come out when the kit is powered. Anyway, there is range limitation for the WIFI signal from NVR. When cameras are out of this range, they can't be connected to NVR wirelessly. NVR and cameras can be connected by the network cable, as shown below:



Right click to open the command menu and click **Video Manage**.

There are two ways to add IPC, "Match Code" and "Auto Add".

Choose "Auto Add", cameras will transmit video to NVR by network cable. If re-match code is needed, cameras will transmit video to NVR wirelessly, and IP address is "172.20.14.X".



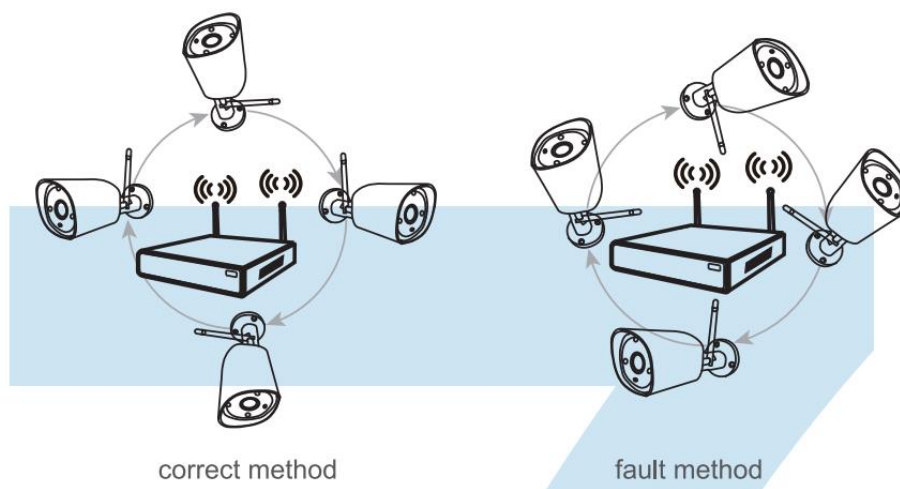
Extend WIFI Range



Wireless connection is easy and convenient, but it's not universally applicable. For the reason of the nature of WIFI, the WIFI signal will decrease when going through some obstacles. Some methods can be applied to bypass obstacles and extend WIFI range.

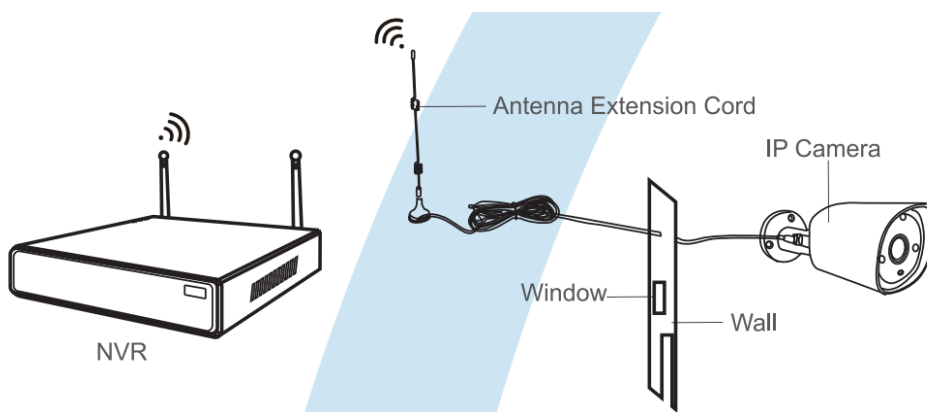
1. Position the Antenna Correctly

WIFI range is like an apple and the antenna of NVR is in the center of it. WIFI signal is strong all around the WIFI range. The antenna of NVR should be put straight up, otherwise the WIFI signal will be weak. According to the signal transmission character of antenna, the antenna of cameras should overlap or parallel to NVR WIFI range, as showed below:



2. Use Antenna Extension Cord to prolong WIFI distance

Installation method of antenna extension cord:



Notes: When WIFI signal is not strong enough, the original antenna can be replaced with antenna extension cord. Drill a hole on the wall to let the extension cord pass through to reach the position where WIFI signal is strong.



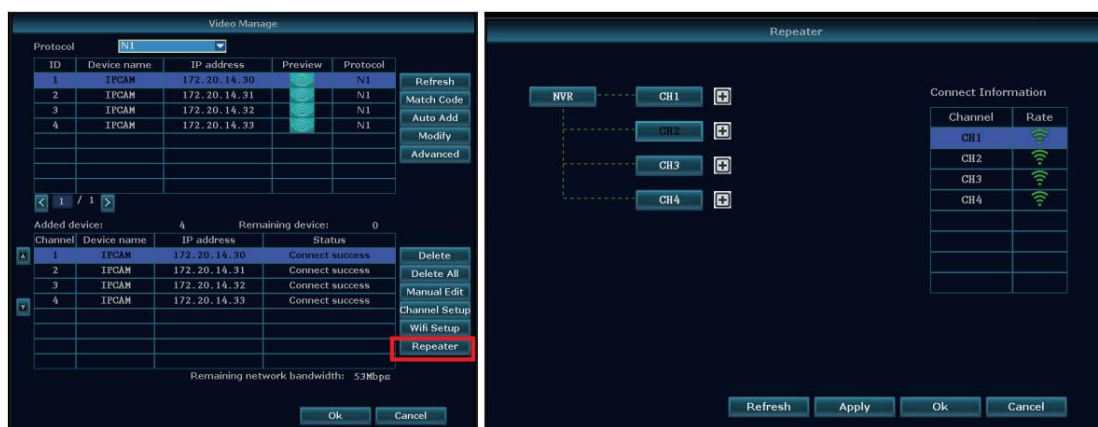
Set up cascading connection in a reasonable solution, extend WiFi signal transfer distance

Note:

1. Repeater function cannot strengthen WIFI signal for wireless NVR kit, but can extend the distance by repeaters WIFI cameras.
2. Only when the repeater cameras and repeated cameras are positioned correctly, WIFI distance could be extended.
3. Repeater function and 3 meters antenna extension cord are two methods to extend WIFI range. They can be chosen according to the situation.

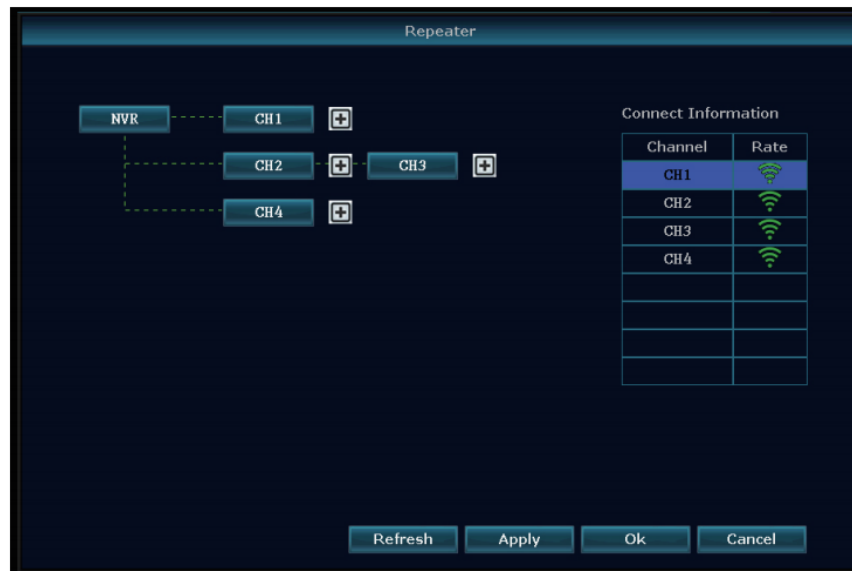
Repeater Setup

- Step 1: Right click on NVR's GUI, left click **Video Manage**, then left click **Repeater**



- Step 2: Add repeater
Click icon + besides channel 3, choose the other channel.

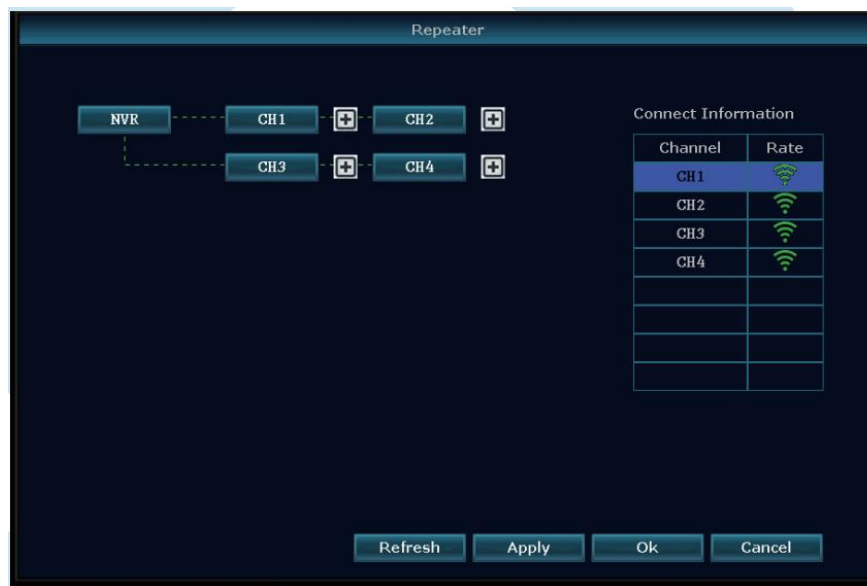




- Step 3: As picture shown below, it means IPC3 is connected to NVR through IPC2 and IPC1. IPC2 is connected to NVR through IPC1. IPC1 is connected to NVR directly.



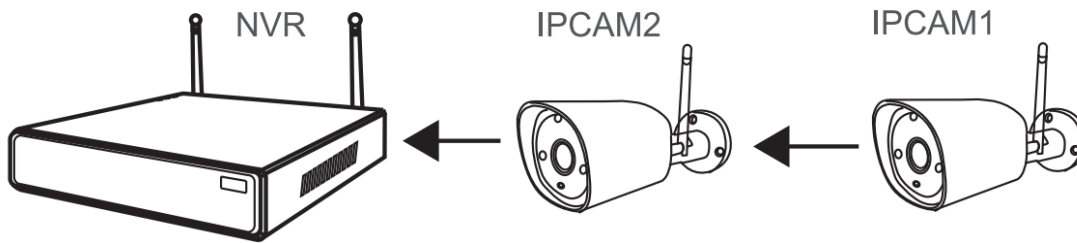
- Step 4: Click **Apply** and then click **Refresh** to check if the setting is succeed.



Delete Repeater

Move the mouse to the target channel, simply left click it to delete, then click **Apply** and **OK**.

Application Example



As picture shown above, when IPCAM1 is put somewhere out of NVR WIFI range, and IPCAM2 is located between NVR and IPCAM1 and can get strong WIFI signal. IPCAM1 close to NVR and power it, setup IPCAM1 repeated by IPCAM2, and then install IPCAM1 to the presupposed place.

Warning

Device will not in guarantee if caused by below reason:

1. Accident, negligence, misoperation;
2. Failed to adapt to the environment and conditions, such as improper power supply, too high or too low working temperature, lightning stroke;
3. 12 months standard warranty period expires.

